

# RIPE Labs

## Operators Tools and Data

DENOG 2, FfM, Germany, 4 November 2010

Mirjam Kühne, RIPE NCC



# What is RIPE Labs?

---

- It is a web site, but more importantly:
  - It is a platform and a tool **for the community**
- You can:
  - Test and evaluate new tools and prototypes
  - Contribute new ideas and research results
  - Provide feedback and discuss with others

<http://labs.ripe.net/>

# Currently on RIPE Labs

tagcloud

api apnic arin  
asns cpe **dns**  
dnssec  
**database**  
netsense pi **reX** ripe  
60 ripe db ripe  
meeting **ripe**  
**ncc** ris rpsl  
allocation atlas  
certification  
datarepository  
**ipv4** **ipv6** ipv6  
adoption  
**measurements**  
policy  
root-servers  
**routing**  
**statistics**  
**tools**

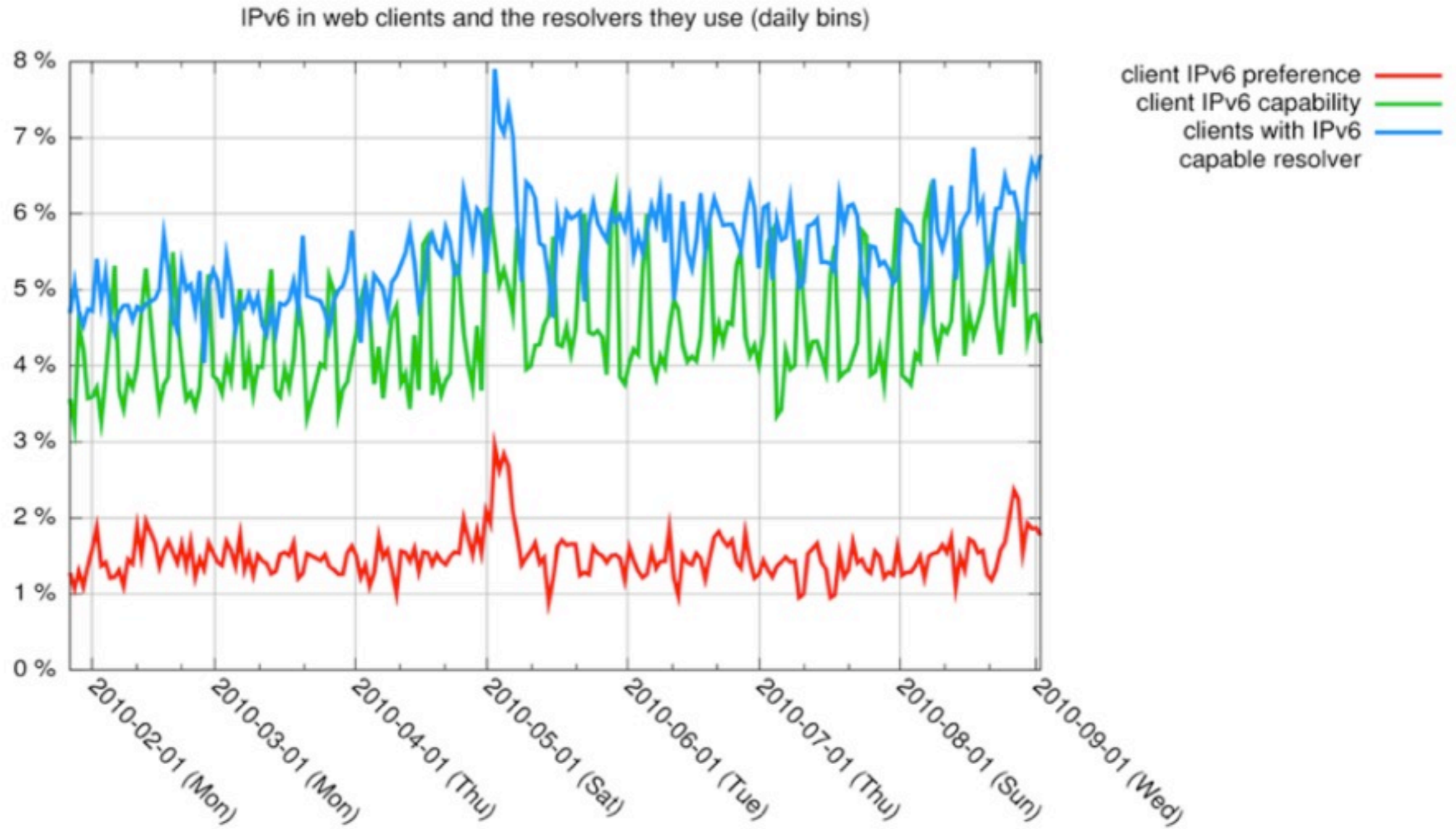
- IPv4 and IPv4 measurements
- DNS and DNSSEC related tools
- RIPE Database API and tools
- Statistics and Measurements
- and much more...

# IPv6 at Web Clients and Resolvers

---

- When people connect to servers, we measure
  - IPv4 capability
  - IPv6 capability
  - IPv4/IPv6 preference
- More resolvers (4.9%) than clients (1.2%) have native IPv6 connectivity
  - Expect to see increase of clients over time
  - We will continue measurements

# Accessing www.ripe.net

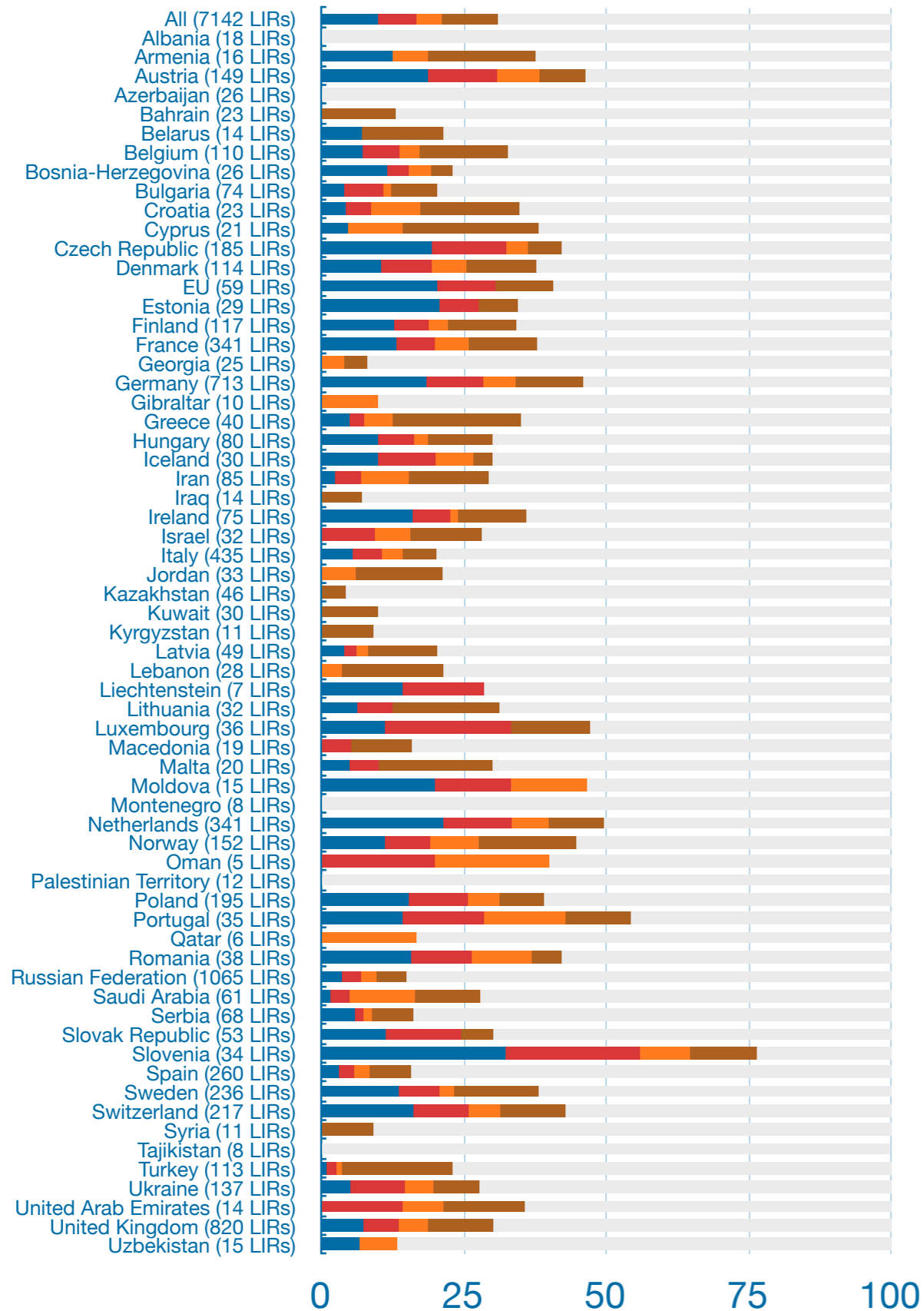


# IPv6 Customer Premise Equipment Survey

- Survey among CPE vendors
- Results will be updated regularly on RIPE Labs

	<b>AVM (FRITZ!Box)</b>	<b>Draytek</b>	<b>Zyxel</b>	<b>Juniper (ScreenOS)</b>	<b>Juniper (JUNOS)</b>	<b>Cisco</b>	<b>D-Link</b>
<b>Hardware version required</b>	7270, 7570	Vigor 2130 series, vigor 120	All models released in 2010	All	All	Most SOHO boxes	Most new boxes
<b>Minimum software level required</b>	"Labor" only	2130:v1.3.0 120:v3.2.4.3	Per model, check vendor	6.1	10.2	12.4T or 15	see notes
<b>Status</b>	Beta	General deployment	Beta	General deployment	Early deployment	General deployment	General deployment
<b>WAN layer 2</b>							
<b>Docsis 3.0</b>	vendor	no	no	no	no	-	-
<b>ADSL 2+</b>	confirmed	120 only	vendor	confirmed	confirmed	confirmed	no
<b>VDSL</b>	confirmed	no	vendor	no	vendor	-	no
<b>Ethernet</b>	confirmed	vendor	vendor	confirmed	confirmed	confirmed	confirmed
<b>FTTx</b>	-	vendor	vendor	no	no	-	no
<b>WAN Layer 3</b>							
<b>PPPoA</b>	confirmed	no	vendor	no	vendor	confirmed	no
<b>PPPoE</b>	confirmed	confirmed	vendor	confirmed	confirmed	confirmed	vendor
<b>RFC1483/bridge</b>	vendor	no	vendor	no	no	vendor	no
<b>RFC1483/routed</b>	-	-	vendor	vendor	vendor	vendor	no
<b>Plain IP</b>	-	vendor	vendor	confirmed	confirmed	confirmed	no

# IPv6 RIPEness



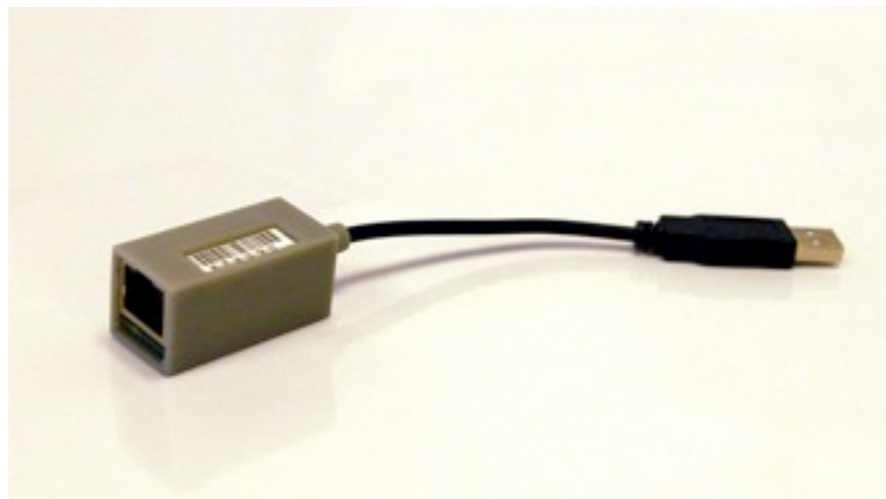
- Only listing countries with 5+ LIRs
- Large variation between countries
- Overall
  - 27% have at least 1 star
  - 73% still have 0 stars



# RIPE ATLAS - Active Measurements

---

- New project to build next generation Internet measurements prototype
- Aim to support 110k (or more) measurement nodes around the Internet
  - can be hosted by ISPs, IXPs, individuals...
- Will be presented at RIPE 61
  - probes will be distributed starting in November





# RIPE Database - New API and Tools

- Whois data via RESTful web interface
- RIPE Database queries including search
- Abuse Finder
  - Tool to find all abuse related contact information
- New and Improved Global Registry Service



# Routing, Anti-Spam, and more...

---

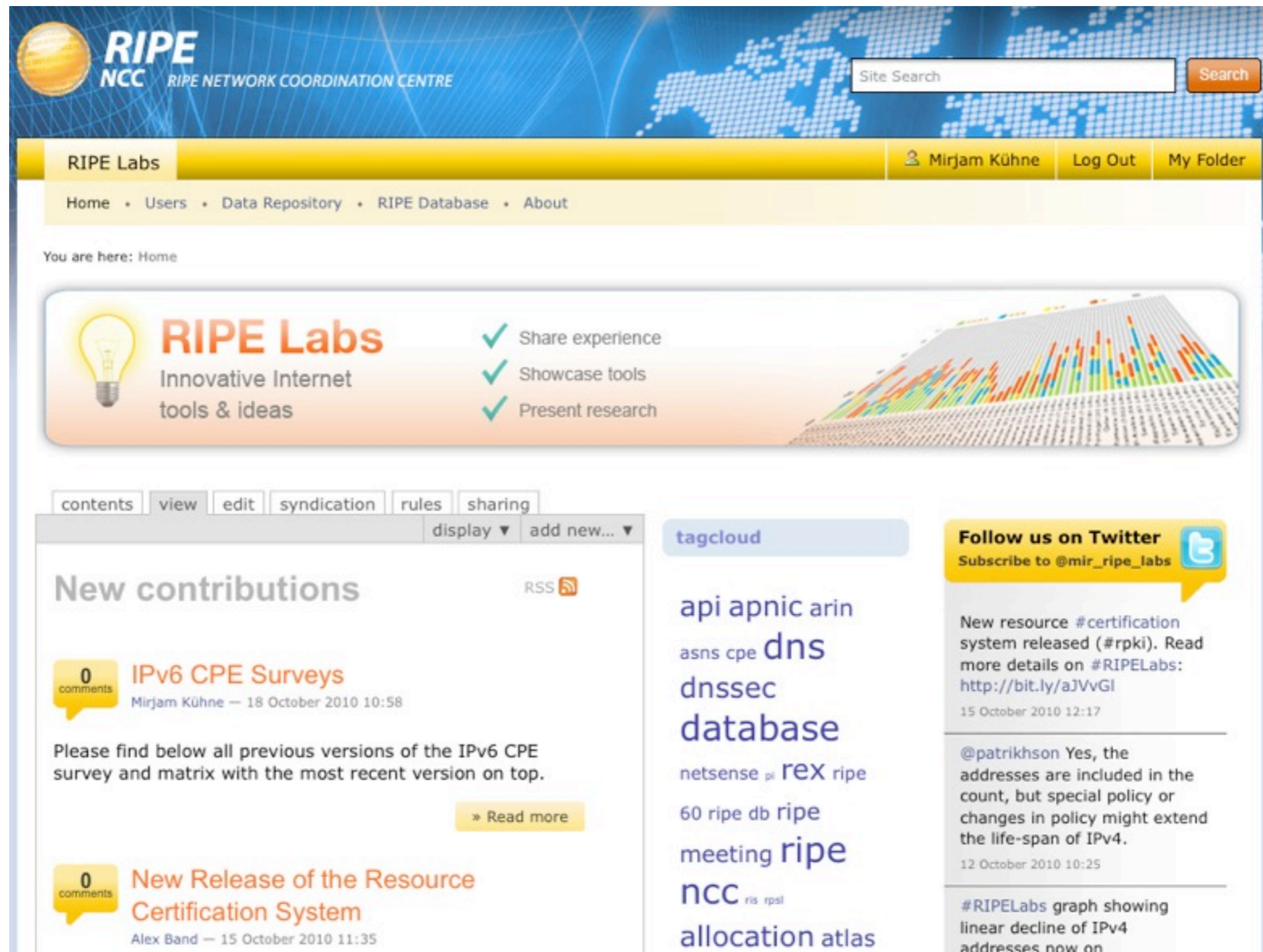
- ExaBGP (Thomas Mangin)
  - A new tool to interact with BGP
- BGP Route Origin Validation (David Murray)
- Economic Incentives for Cooperation to fight Spam (John Quarterman)
- Background Radiation in IPv6 (Geoff Huston)
- IPv6 Crawler and Matrix (Olivier Crepin-Leblond)

# Recent Improvements

---

- New website launched recently
- Better navigation and search
  - Tag cloud, life search, long-term project pages
- Easier communication and participation
  - No need to register to leave comments on site
  - Registration only necessary for content submissions and Data Repository

# New RIPE Labs Homepage



The screenshot shows the RIPE Labs homepage with a blue header featuring the RIPE NCC logo and a search bar. A yellow navigation bar contains the 'RIPE Labs' title and user options for Mirjam Kühne. A breadcrumb trail leads to 'Home'. A central banner highlights 'RIPE Labs' as a place to share experience, showcase tools, and present research. The main content area is titled 'New contributions' and lists two articles: 'IPv6 CPE Surveys' and 'New Release of the Resource Certification System'. A 'tagcloud' on the right lists various technical terms, and a Twitter feed on the far right provides updates on recent resources and discussions.

**RIPE NCC** RIPE NETWORK COORDINATION CENTRE

Site Search  Search

RIPE Labs Mirjam Kühne Log Out My Folder

Home • Users • Data Repository • RIPE Database • About

You are here: Home

**RIPE Labs**  
Innovative Internet tools & ideas

- ✓ Share experience
- ✓ Showcase tools
- ✓ Present research

contents view edit syndication rules sharing display ▼ add new... ▼

## New contributions

RSS

**0** comments **IPv6 CPE Surveys**  
Mirjam Kühne — 18 October 2010 10:58

Please find below all previous versions of the IPv6 CPE survey and matrix with the most recent version on top.

» Read more

**0** comments **New Release of the Resource Certification System**  
Alex Band — 15 October 2010 11:35

### tagcloud

api apnic arin  
asns cpe dns  
dnssec  
database  
netsense pi rex ripe  
60 ripe db ripe  
meeting ripe  
ncc ris rpsl  
allocation atlas

### Follow us on Twitter

Subscribe to @mir\_ripe\_labs

New resource #certification system released (#rpki). Read more details on #RIPELabs: <http://bit.ly/aJVvGI>  
15 October 2010 12:17

@patrikhson Yes, the addresses are included in the count, but special policy or changes in policy might extend the life-span of IPv4.  
12 October 2010 10:25

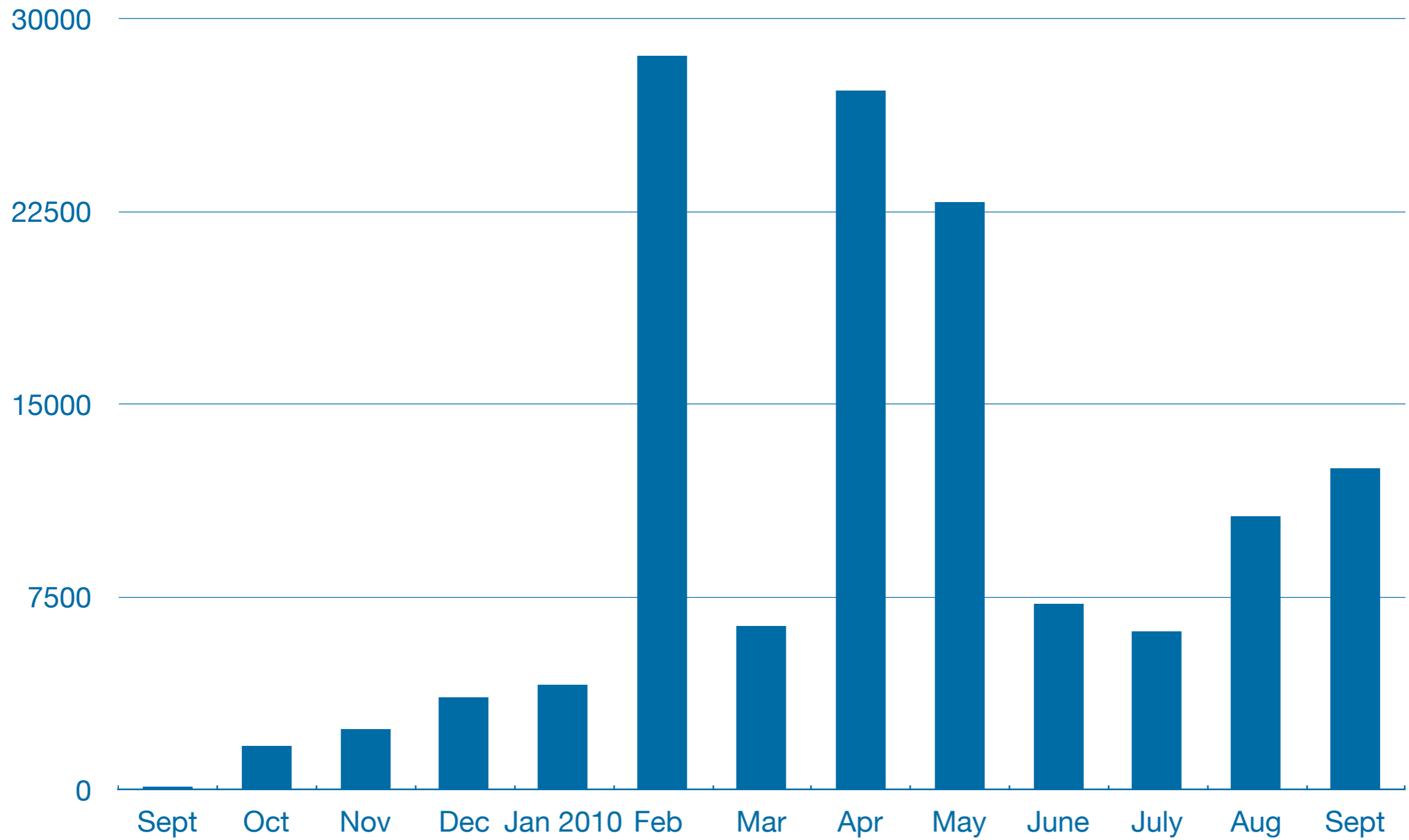
#RIPELabs graph showing linear decline of IPv4 addresses now on

# Why RIPE Labs?

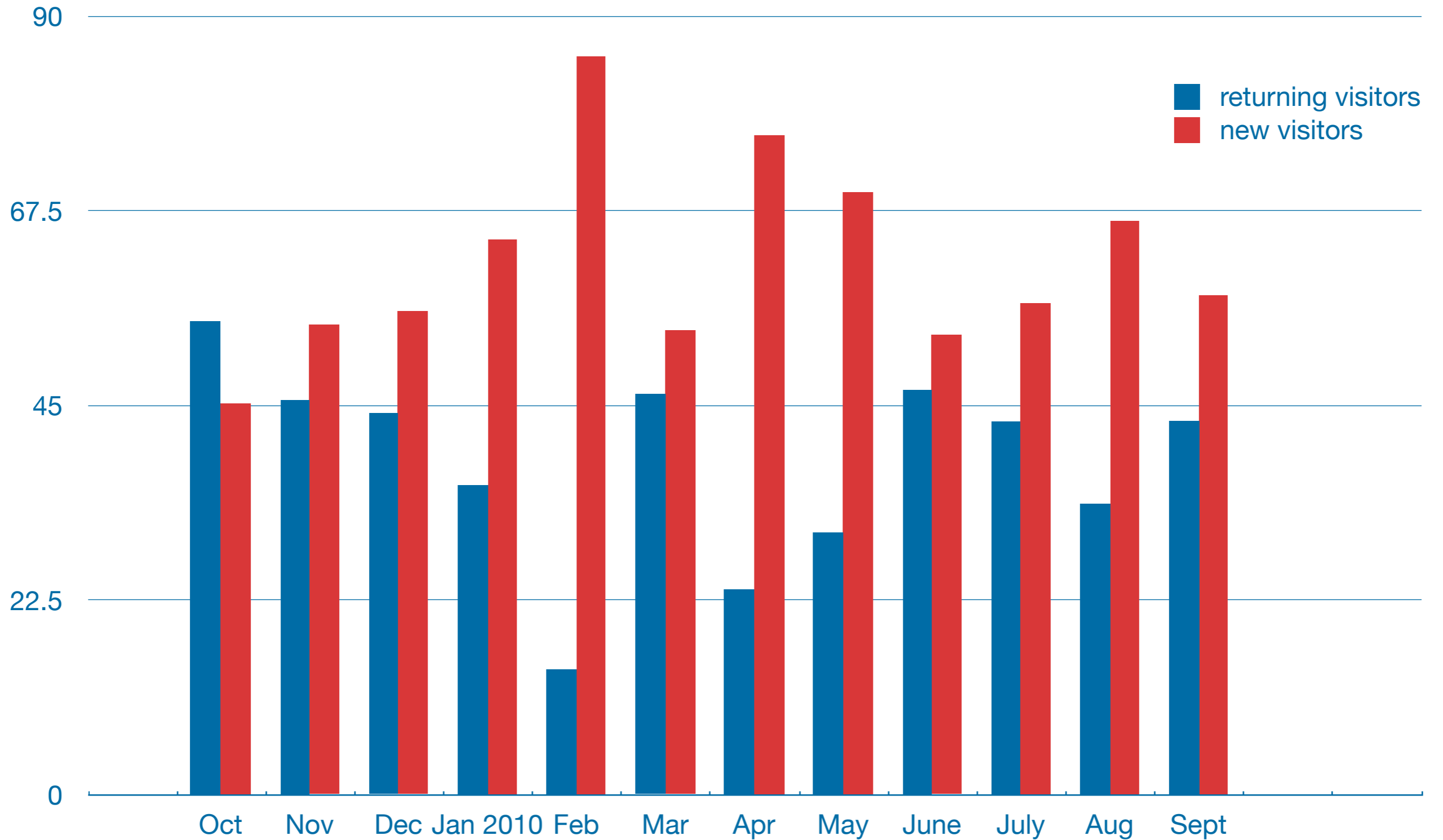
---

- Faster, tight innovation cycle
  - Provide useful prototypes to you earlier
  - Adapt to the changing environment more quickly
- Closer involvement of the community
  - Openness
  - Make feedback and suggestions easier and more effective

# Number of Unique Visitors



# Returning vs. New Visitors (%)



# Suggestion and Questions

---

- Please take a look and **participate**
- Leave a comment under an article
- Questions and suggestions to [labs@ripe.net](mailto:labs@ripe.net)

<http://labs.ripe.net/>



# Questions?

