

Monitoring 101

Netzwerk-Latenzen mit ping_exporter und Prometheus



“Gab es bei euch eine Störung im Netz?”



“Gab es bei euch eine Störung im Netz?”

NEIN..?!



“Gab es bei euch eine Störung im Netz?”

NEIN..?!

Ja...?!



“Gab es bei euch eine Störung im Netz?”

NEIN..?!

Ja...?!

Ääh, wir melden uns!

“Es gibt ja keine gesunden Menschen - nur solche die bisher zu wenig untersucht wurden.”

-Manfred Lütz, Lebenslust

https://github.com/czerwonk/ping_exporter

Philip Berndroth (pberndro), Daniel Czerwonk (dan_nrw)



Prometheus

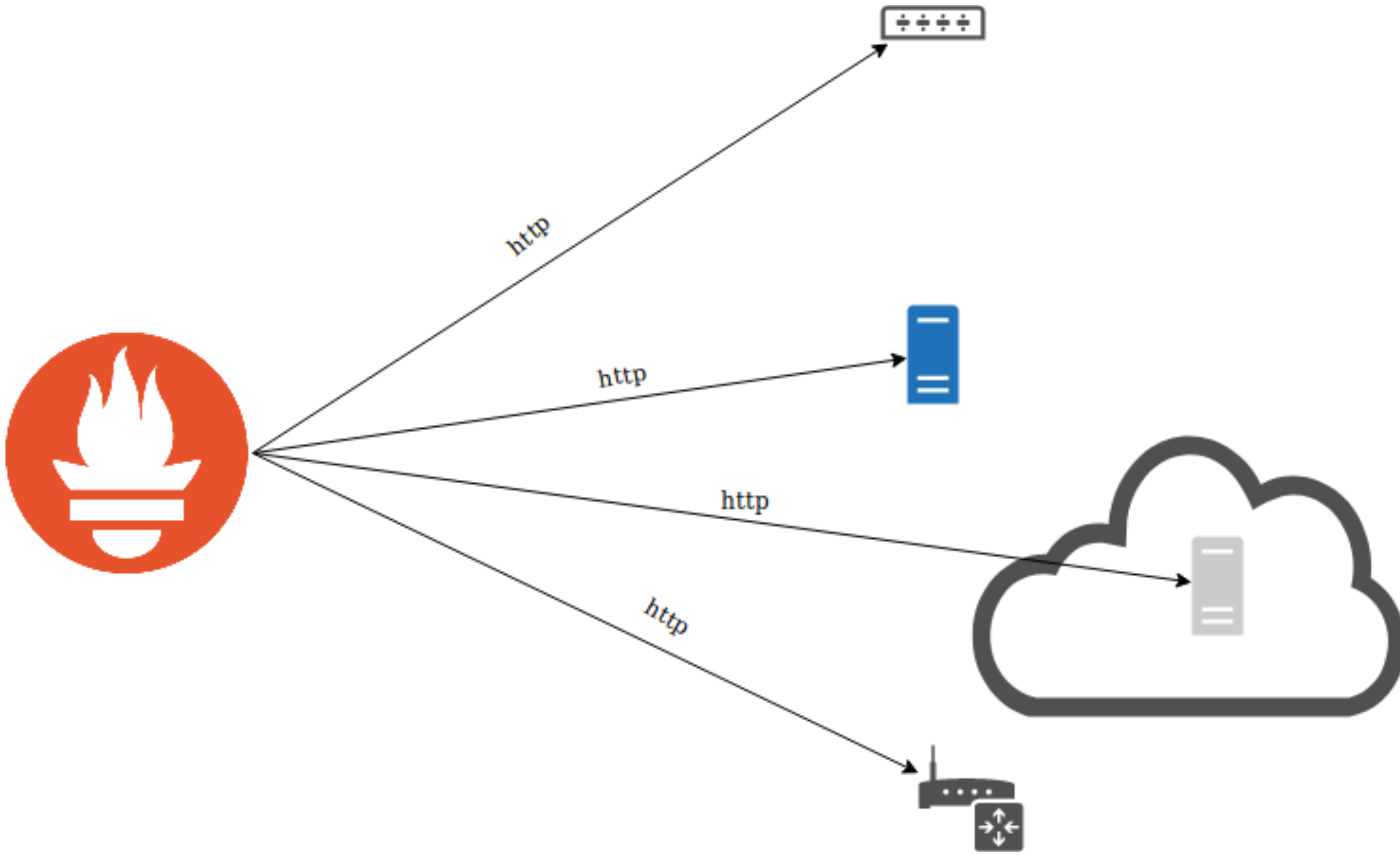


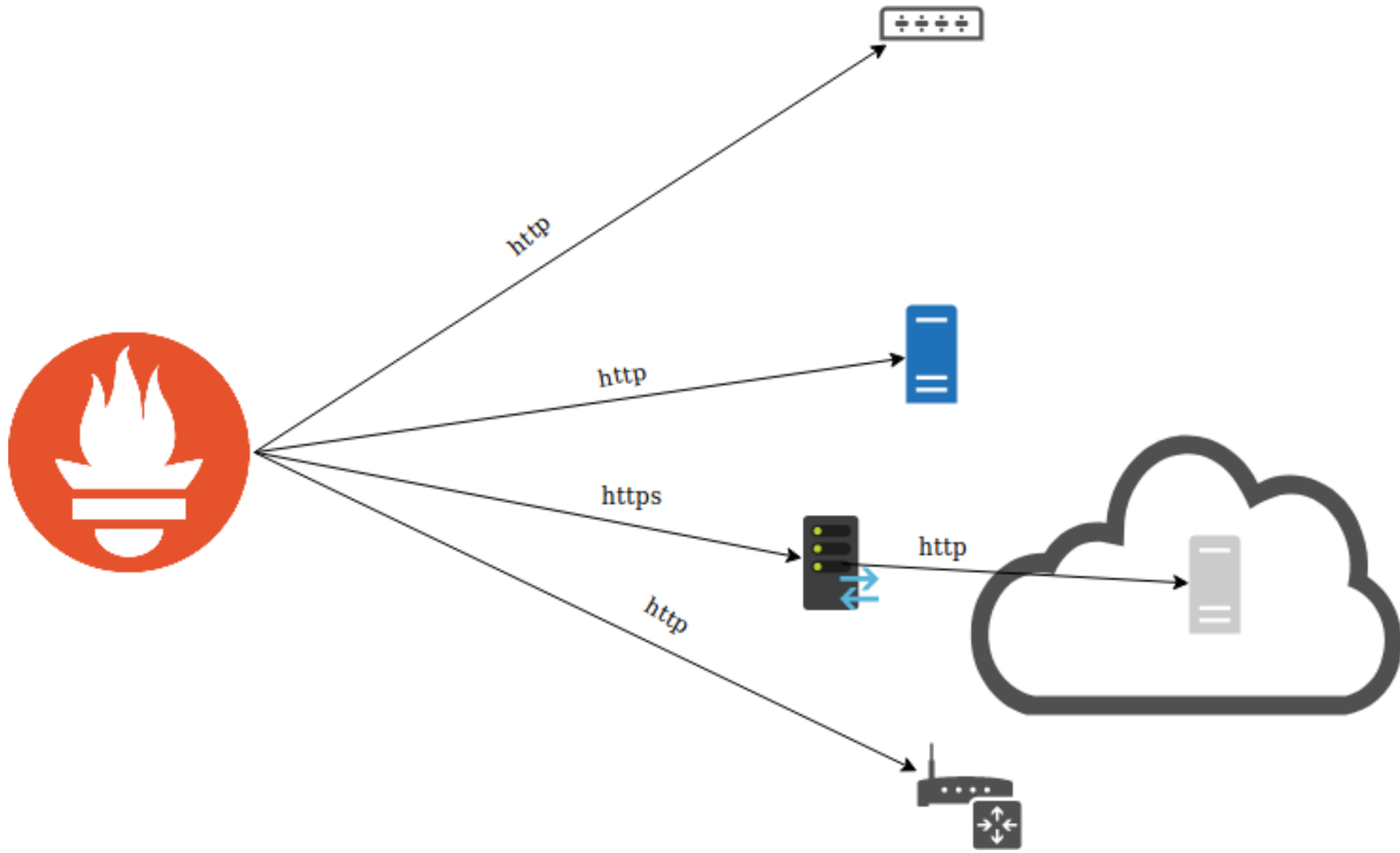


- Golang -> Binary für jeweilige ARCH -> Deploy
- Config als YAML
- ✓

Deployment

- Ansible:
 - Schicke ping_exporter Binary
 - Schicke Config
 - Starte ping_exporter mit config





Config & Targets

targets:

- 8.8.8.8
- 1.1.1.1
- 2a02:f28:2:5:0:6d69:7272:6f72
- isp.syseleven.net
- facebook.com
- www.carrier-colo.com

Config & Targets

targets:

- 8.8.8.8
- 1.1.1.1
- 2a02:f28:2:5:0:6d69:7272:6f72
- isp.syseleven.net
- facebook.com
- www.carrier-colo.com



IPv4 Adressen

Config & Targets

targets:

- 8.8.8.8

- 1.1.1.1

- 2a02:f28:2:5:0:6d69:7272:6f72

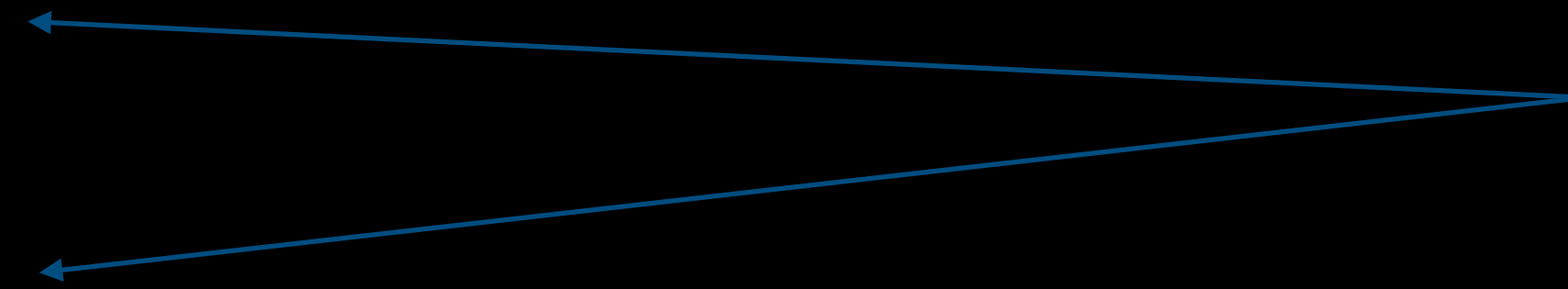
- isp.syseleven.net

- facebook.com

- www.carrier-colo.com

IPv4 Adressen

IPv6 Adressen



Config & Targets

targets:

- 8.8.8.8

- 1.1.1.1

- 2a02:f28:2:5:0:6d69:7272:6f72

- isp.syseleven.net

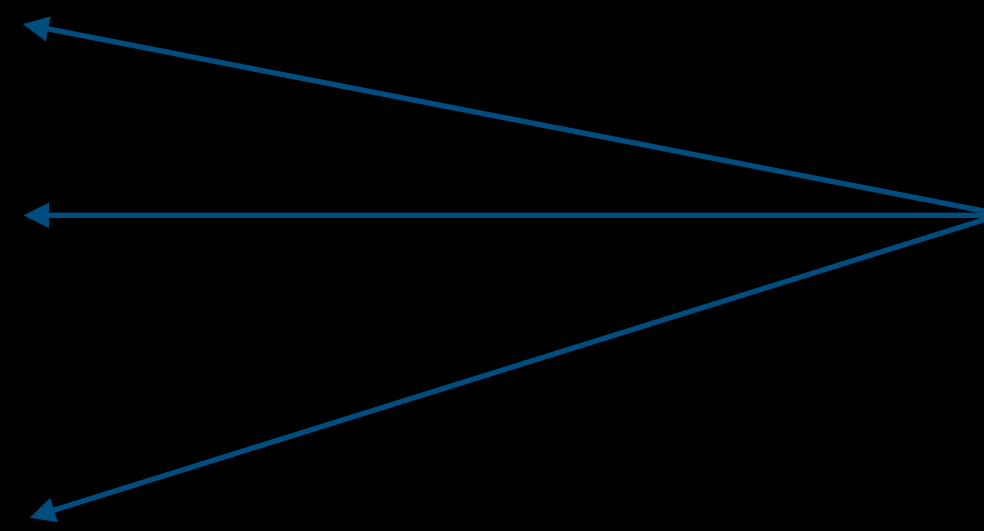
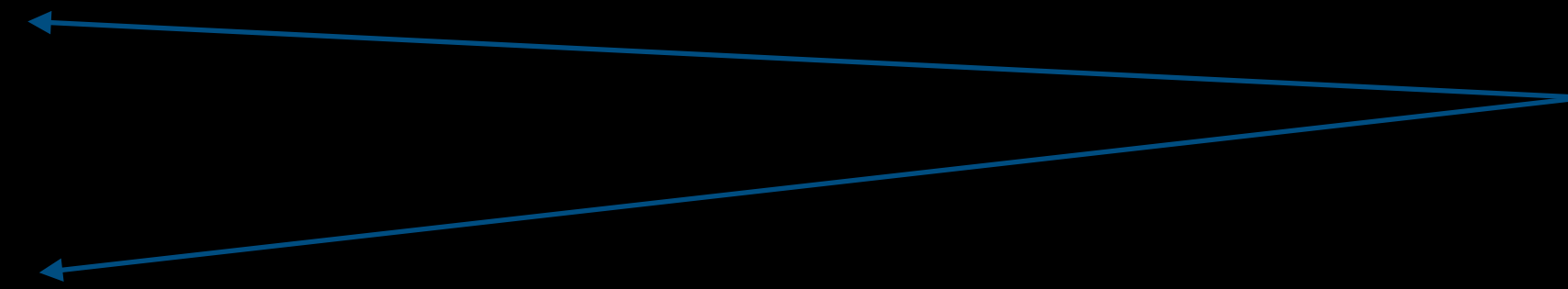
- facebook.com

- www.carrier-colo.com

IPv4 Adressen

IPv6 Adressen

Hostnamen



ping_rtt_best_ms

Best round trip time in milliseconds

ping_rtt_worst_ms

Worst round trip time in milliseconds

ping_rtt_mean_ms

Mean round trip time in milliseconds

ping_rtt_std_deviation_ms

Standard deviation in milliseconds

ping_loss_percent

Packet loss in percent

Label

- ip
- target
- ip_version

Label

- ip
- target
- ip_version

```
ping_rtt_mean_ms{ip="37.44.0.120"}
```

Label

- ip
- target
- ip_version

```
ping_rtt_mean_ms{target="www.google.com"}
```


Label

- ip
- target
- ip_version

```
ping_rtt_mean_ms{target="www.google.com",ip_version="6"}
```

```
ping_rtt_best_ms{ip_version="4",target="facebook.com"}
```

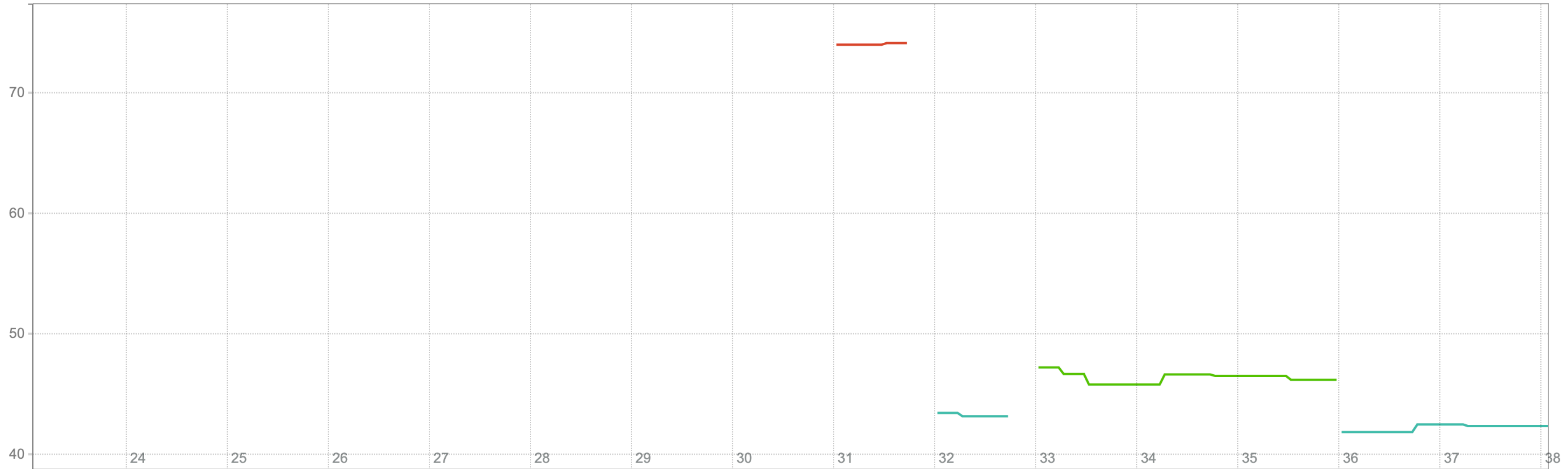
Load time: 171
Resolution: 3s
Total time seri

Execute

- insert metric at cursor ↕

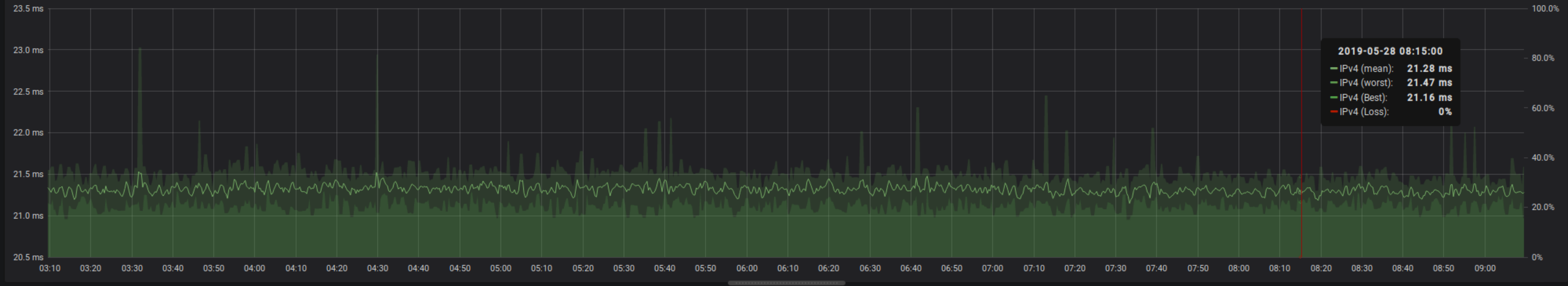
Graph Console

- 15m + ⏪ Until ⏩ Res. (s) stacked



- ✓ ping_rtt_best_ms{instance="127.0.0.1:9427",ip="31.13.90.36",ip_version="4",job="ping",target="facebook.com"}
- ✓ ping_rtt_best_ms{instance="127.0.0.1:9427",ip="31.13.64.35",ip_version="4",job="ping",target="facebook.com"}
- ✓ ping_rtt_best_ms{instance="127.0.0.1:9427",ip="157.240.20.35",ip_version="4",job="ping",target="facebook.com"}

isp.syseleven.net (IPv4) ▾



CCCB (IPv6)

